

User Guide

Product Features

- USB Specification Rev. 1.1 compliant
- Support the RS232 Serial interface
- Over 1Mbps data transfer rate
- Support remote wake-up and power management

System Requirements

- IBM PC 486DX4-100 MHz CPU or higher or compatible system
- Available USB port
- CD-ROM drive
- Windows 2000/xp/vista/7.0/8.0

Driver Installation (win2000/xp)

Follow the steps below to install Window 2000/XP driver of USB TO RS232

1. Power on your computer and make sure that the USB port is enabled and working properly.
2. During installation , please don't link USB TO RS232 with your computer .
3. Double click ' PL2303_Prolific setup.exe ', then it will start install



4. After installation , click ' OK '
5. Plug in the USB TO RS232 into the USB port and run the Found New Hardware Wizard to assist you in setting up the new device. Click Next to continue.



- click Next to continue. Select the “ Search for a suitable driver for my device(recommand)



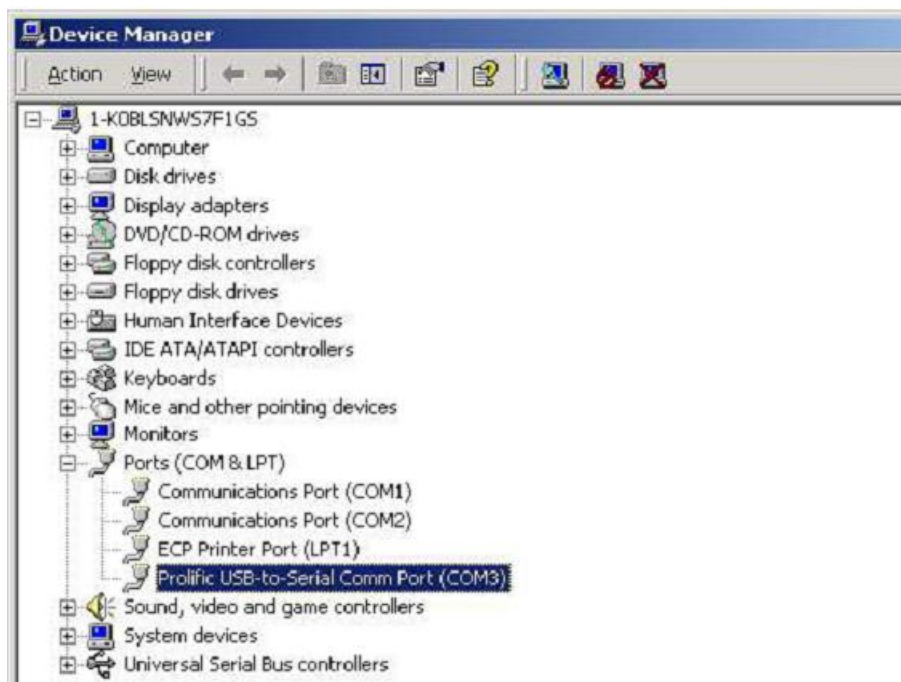
- Windows will detect the driver and Click Next to continue installation.



- Click Finish to continue and let Windows copy the needed files to your hard disk.



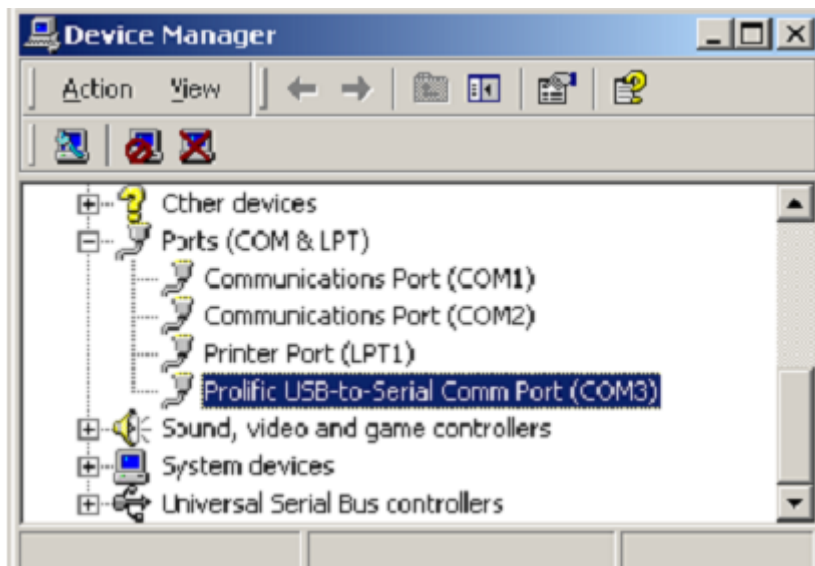
9. You can to check the Device Manager and see the Prolific USB to Serial Comm Port)



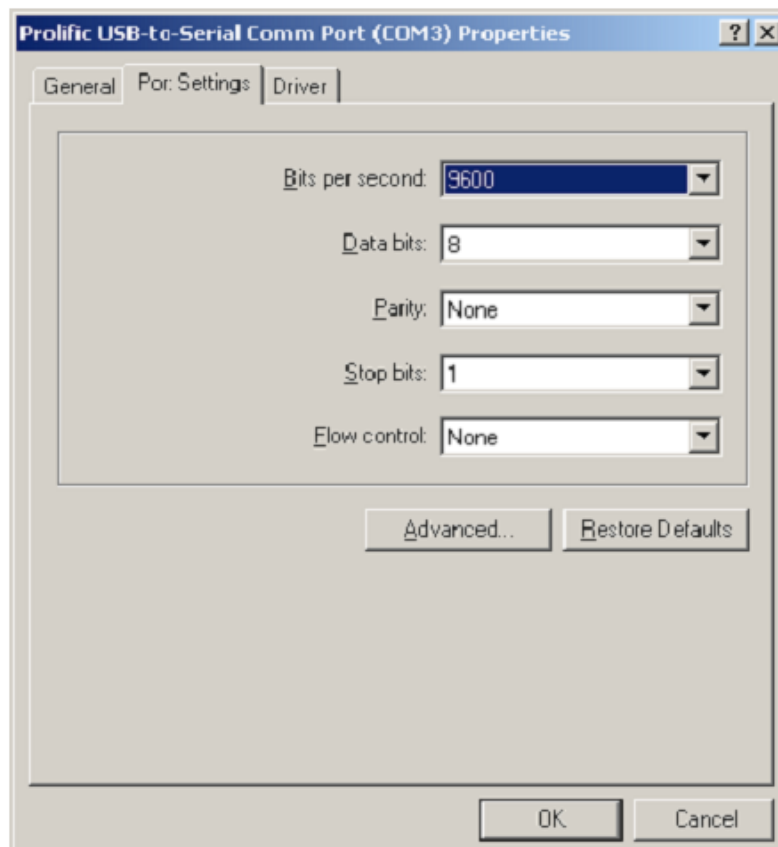
Changes COM Port

Under Windows 2000 、 Windows XP, please kindly following the steps as below. :

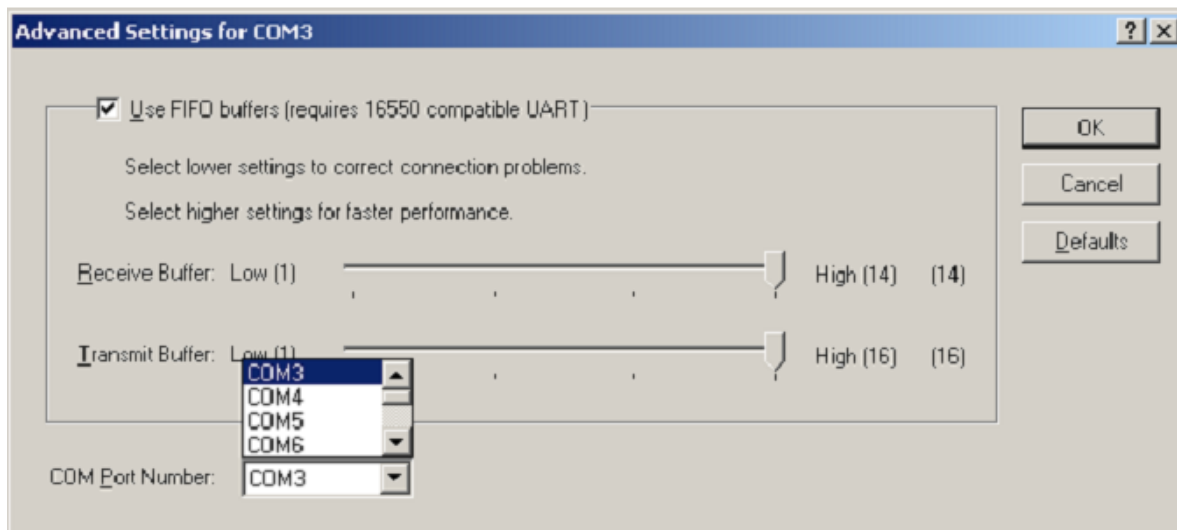
- (1) Please click on the Device Manager\ Devices by connection \ ports (COM & LPT).



(2) Doubly click on “Prolific USB-to- serial Comm port(COM3)” .And it could go to ‘ properties’.



(3) Please choose "Port Settings ", and then click on "Advanced". Please kindly choose the needed com, and click on" ok”.



Notice:

If the Modem could not link with the new port, and run smoothly when changed the port, please kindly unload Modem, and re-install it. When Changing the port, the peripheral equipment could not shift to the new port, and run smoothly. Under this situation, please kindly unload the equipment and install again.